

MWS30 Modular Control Room Workstation System

**AUDIO VISUAL
FURNITURE
International**

The **MWS30** A modular control room workstation is a highly adaptable and ergonomically designed console system solution for environments like security centers, traffic management, command-and-control rooms, or simply as an office workstation. The system components can be customized or reconfigured to suit various operational needs and spatial constraints.

Monitors and chairs shown are for display and reference only

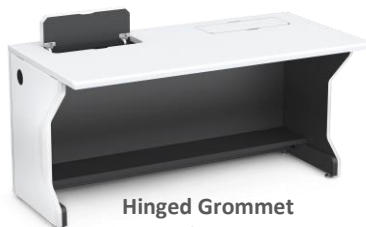


MWS30-ISL72

MWS30-48GMT



Standard
Workstation



Hinged Grommet
Workstation



Monitor Track Mount
Workstation

SYSTEM COMPONENTS AVAILABLE

MWS30-48STD 48" Standard Workstation
MWS30-48GMT 48" Hinged Grommet Workstation
MWS30-60STD 60" Standard Workstation
MWS30-60GMT 60" Hinged Grommet Workstation
MWS30-60MTM 60" Monitor Track Mount Workstation
MWS30-72STD 72" Standard Workstation
MWS30-72GMT 72" Hinged Grommet Workstation
MWS30-72MTM 72" Monitor Track Mount Workstation
MWS30-ISL72 72" Island (Includes Top and gable legs)
MWS30-TIR90 Connecting Top Inside Round 90° angle
MWS30-TOR90 Connecting Top Outside Round 90° angle
MWS30-TIR30 Connecting Top Inside Round 30° angle
MWS30-TOR30 Connecting Top Outside Round 30° angle
MWS30-DOORL Storage Door Left (Fits all workstations)
MWS30-DOORR Storage Door Right (Fits all workstations)
MTM14- KIT Monitor Track Mount Kit

KEY FEATURES:

Modular Design: Allows for scalability and reconfiguration based on room layout, team size, or technological upgrades.

Ergonomics: Operator comfort with features like monitor positioning and easy access to equipment. ADA compliant.

Cable Management: Integrated solutions keep wiring organized and out of sight, ensuring safety and easy maintenance.

Technology Integration: Accommodates multiple monitors, control devices, 3U space for rack mounting sideways, PC storage, and IT hardware with easy access to power and data connections.

Durability: Sturdy design constructed with high-quality materials and highly resistant thermowrap surf(x) panels to withstand continuous use in high-demand environments.

▪ Ships assembled.

Workstation specifications:

Width: 48"-60"-72"
Depth: 30.0"
Height: 29.0"

Finishes Available:



The information contained in this drawing is the sole property of Audio Visual Furniture International. Any reproduction in part or as a whole without the written permission of Audio Visual Furniture International is prohibited. We can build or modify stock configurations to suit customer specifications. Please contact us to discuss how this service can help meet your needs. Some quantity restrictions may apply. Specification subject to change without notice. Computers, cameras, monitors, etc. are shown to illustrate product usage and are not included unless otherwise noted.

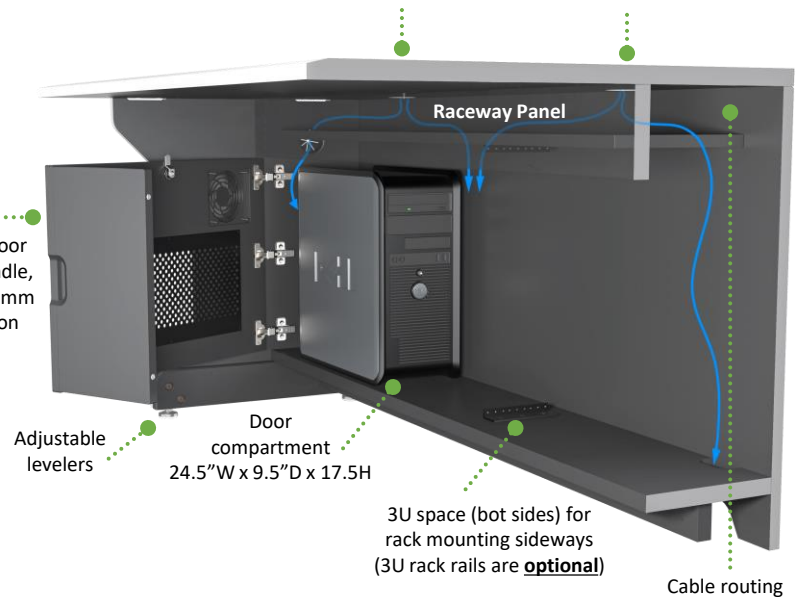
WORKSTATION STANDARD FEATURES

- All Workstations feature highly resistant Thermowrap surf(x) panels.
- Side and top grommets for cable pass through.
- Horizontal raceway removable panel for cable management. (Panel can also be custom cutout for electronics)
- Shelf compartment for PC storage or 3U rack mounting sideways.
- Hole openings on horizontal panel for cables to run down the unit.
- Mounting holes ready for optional Storage Door.
- Adjustable levelers.

STANDARD WORKSTATION

Features a plain worksurface with grommets

Optional Locking Door with ergonomic handle, metal vent, and 120mm Fan accommodation



HINGED GROMMET WORKSTATION

Features a worksurface with 2x soft-close hinged cable outlet lid, designed for a professional-look and to keep cables out of the way and ready when needed.



MODULAR CONNECTIVITY

Metal plate provides easy ganging for workstations and optional Connecting Tops through the side openings



MONITOR TRACK MOUNT WORKSTATION

Features a worksurface with integrated Monitor Track Sliding Mount System and articulated Monitor Arm for optimizing workspace while increasing monitor adjustability.

